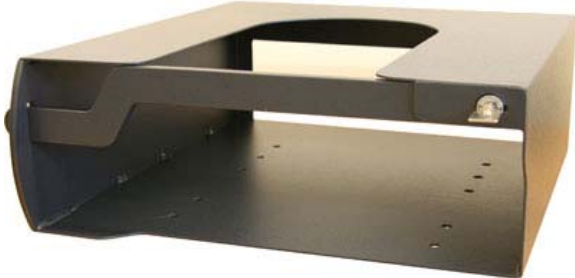


## 24 hour access to drives while permanently secured



### Loxbar Desktop PC

The Loxbar range of computer security is a tried and tested, efficient method of securing your PC whilst allowing access to all drives and peripherals.

#### Key Features:

**Permanently secure PC with 24 hour access to all drives**

Custom built - **smallest possible footprint**

**Monitor base capture** as standard

**2mm all welded steel body**

**10mm thick locking bar**

**10,000 differ plunger lock** with keying options

Fix directly to the desk or work surface

Alternatively, secure the Loxbar enclosure by tethering it to the building or furniture using security cable kit

**Loxbar Custom PC code: 0009**



### Loxbar Tower

Incorporating all the features of the Loxbar PC, the Loxbar Tower is a versatile and effective PC security enclosure.

Our standard mini tower models accommodate a large range of computer sizes.



(sizes in mm)	Case Size			Maximum PC Size			code:
	h	w	d	h	w	d	
<b>Standard 450</b>	470	260	520	450	220	430	<b>0019</b>
<b>Large 500</b>	520	280	590	500	240	480	<b>0020</b>

**Custom built enclosures are available.**

Contact us for details.